

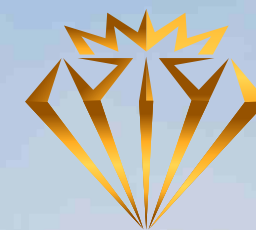


**PRAGATI  
DEVELOPERS**  
Turning Ideas Into Reality



# PRAGATI ICON

*The Epicenter of Luxury and Comfort*



**PRAGATI ICON**

*The Epicenter of Luxury and Comfort*

Perfection is the first thing that you will notice when you lock your eyes at **'PRAGATI ICON'**, a cradle of luxury and comfort designed in Ghatkopar at the heart of Mumbai. Experience a majestic G+17 floor Residential cum Commercial Tower comprising of 84 luxurious 2BHK and 3BHK homes ranging from 582 to 888 sq.ft.RERA Carpet & 4 Commercial Shops.

Every inch of space is designed, utilized and crafted to perfection by a team of highly trained and trusted professionals. **'PRAGATI ICON'** is your one-stop harbour for your ideal home which is as rare as you.

## PROJECT HIGHLIGHTS:

MAHARERA Approved Project

G/Stilt + 17 Storey Iconic Tower

Luxurious 2 & 3 Bhk Apartments

Residential & Commercial Tower

Quality Construction with Hightech and Modern Amenities

Automated Car Parking Tower

Loan available through leading Banks and Financial institutions



# Amenities & Specifications

## STRUCTURE:

- Earthquake resistant Building.
- G+17 Storeyed RCC framed structure with concrete block masonry walls adding extra strength and stability.

## FLOORING:

- Superior quality Vitrified tiles (32"x32") for flooring and skirting in all rooms.

## KITCHEN:

- Granite kitchen platform.
- Branded SS Sink.
- Designer wall tiles.
- Exhaust fan

## TOILETS:

- Anti-skid tiles for flooring
- Superior quality Ceramic tiles for the walls.
- Premium Branded Bath and Sanitary C.P. fittings
- Branded Geyser and Exhaust Fan.

## DOORS AND WINDOWS:

- Designer laminated flush door with elegant handle and branded lock for doors.
- Wooden door frames for main door and all bedroom doors.
- Granite door frame for toilets.
- ACP doors for toilets.
- Powder coated/Anodized Aluminium sliding windows with clear glass.
- Combination of Black Granite and White Marble window frame.
- One panel mosquito prevention net.
- MS Grill for safety on windows.

## WALLS & PAINT:

- Gypsum finished internal walls.
- Premium quality paint for internal walls and ceiling.
- Premium quality Apex weather proof external emulsion paint for external walls.

## ELECTRIC:

- High grade concealed copper wiring with MCB.
- Adequate Electric, AC, TV, Telephone points.
- Internet Cat-6 Cable provided.
- Modern designer switches.

## LIFT:

- Total 2 Hightech lifts of reputed company (OTIS/KONE/SCHINDLER).

## FIRE SAFETY:

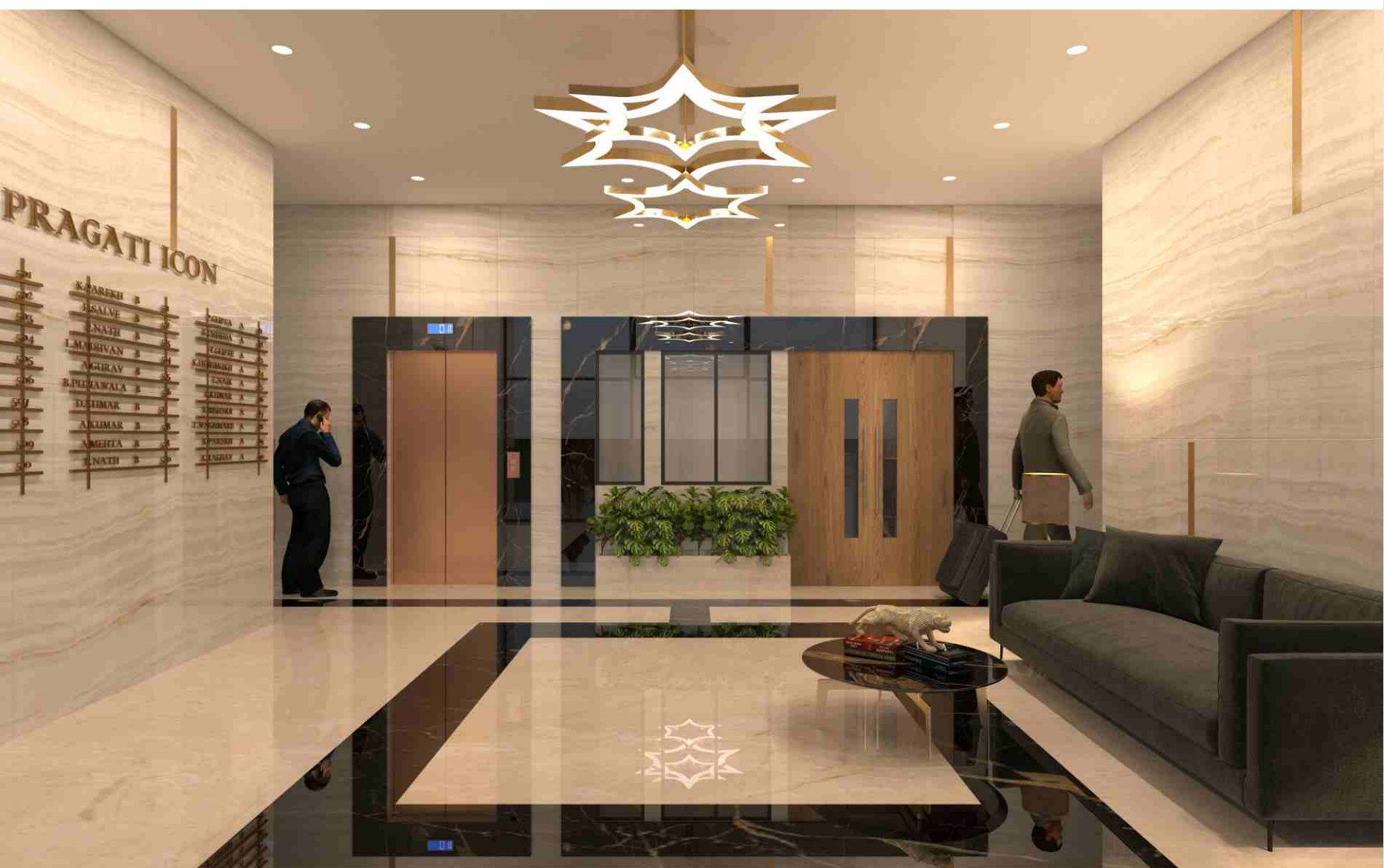
- Sprinkler system at common areas and in apartments.
- Portable fire Extinguisher.



Note: The information is indicative of the kind of development that is proposed. It is prepared and issued in good faith and is for guidance only. It does not constitute part of any offer or contract. It is subject to the approval from the respective authorities. The photographs and the artist impressions in the brochure are for reference only. All the amenities provided subject to approval of MCGM.

# Tower Features

- Solid 5 ft. designed compound wall.
- Well designed main gate with security cabin.
- Grand air conditioned main entrance lobby.
- Tremix finish flooring for compound area.
- Society office on ground floor.
- Anti-termite treatment for Building foundation.
- Premium branded highspeed automated lifts.
- Common toilet on ground floor.
- Automated car parking tower.
- Underground and overhead water tanks with adequate storage capacity.
- 24/7 CCTV Camera surveillance.
- Power backup generator on ground floor for common areas.
- Fire-fighting system
- Rain water harvesting system.



## 2 BHK



## 3 BHK

Note: The information is indicative of the kind of development that is proposed. It is prepared and issued in good faith and is for guidance only. It does not constitute part of any offer or contract. It is subject to the approval from the respective authorities. The photographs and the artist impressions in the brochure are for reference only. All the amenities provided subject to approval of MCGM.

# Connectivity

## PUBLIC TRANSPORT

- Ghatkopar Metro Station 1 (7 mins. walk)
- Ghatkopar Railway Station (7 mins. walk)
- Ghatkopar Main Bus Depot (10 mins. walk)
- Lokmanya Tilak Terminus (5 kms)
- (Prop.) Pant Nagar Metro Station 4 (200 mtr.)

## HIGHWAY

- Santacruz - Chembur Link Road (4 kms.)
- Eastern Express Highway (1.6 kms.)
- LBS Road (1.5 kms.)
- Sion - Panvel Highway (6.3 kms.)

## AIRPORT

- Terminal 2 (7.3 kms.)
- Terminal 1 (10.2 kms.)

## HOSPITALS

- Parakh Hospital (10 mins. walk)
- Aashirwad Hospital (1.8 kms.)
- Rajawadi Hospital (2.2 kms.)

## SCHOOL / COLLEGE

- Somaiya School & College (2.7 kms.)
- Garodia International School (2 kms.)

- Shivaji Shikshan Sanstha School (1min. walk)
- Universal School (1.8 kms.)
- RBK International School (4 kms.)

## GARDENS

- Acharya Atre Maidan (5 mins. walk)
- Arun Vaidya Maidan (4 mins. walk)
- Lions Garden (1.6 kms.)
- 90 Feet Garden (1.5 kms.)

## TEMPLE

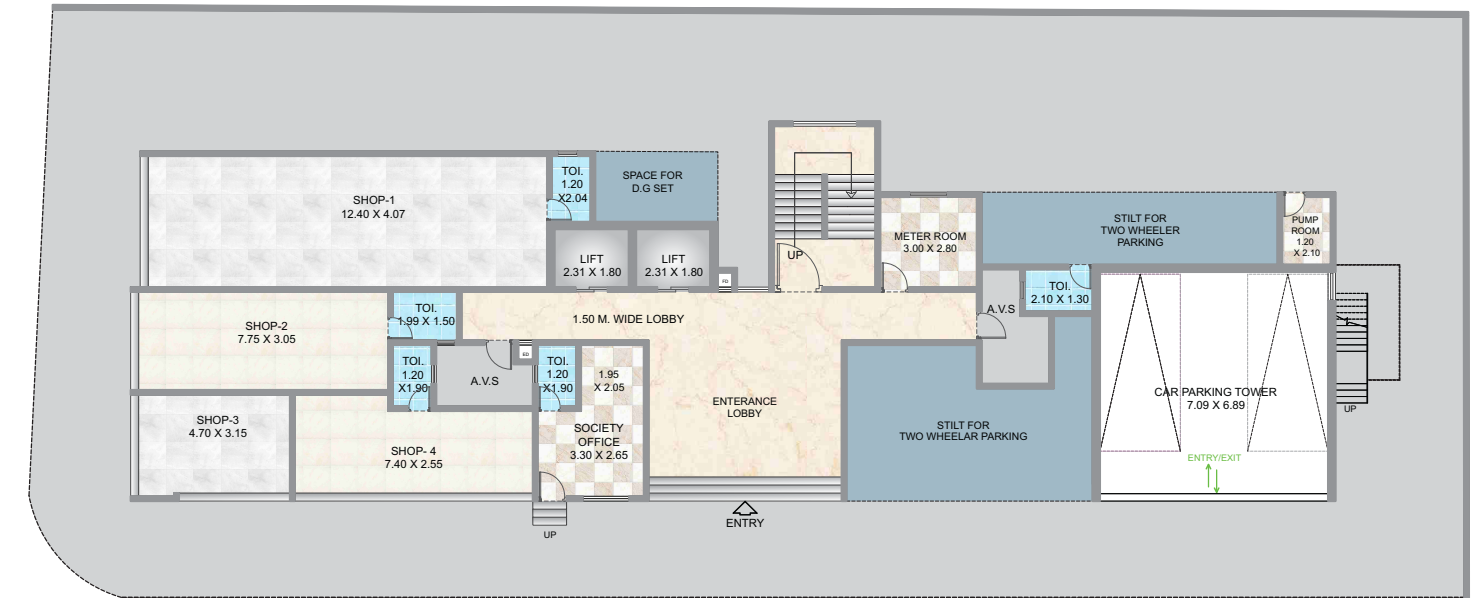
- Siddhivinayak Temple (7 mins walk)
- Kukreja Jain Derasar (1.5 kms.)
- Parasdham (1.4 kms.)
- Ambe Mata Temple (6 mins. walk)
- Swaminarayan Temple (1.4 kms.)

## MALL

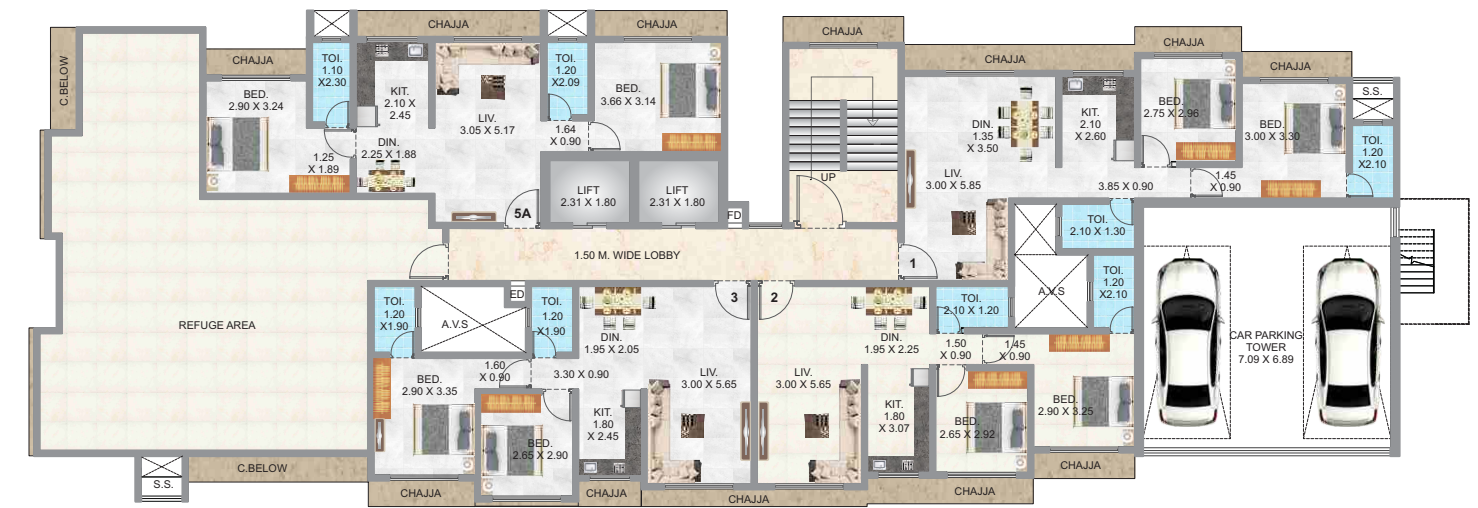
- R Odeon Mall (1 km.)
- R City Mall (2.6 km.)
- Phoenix Mall (4.1 kms.)

## MULTIPLEX

- PVR Cinemas (1 km.)
- Inox (7 mins. walk)



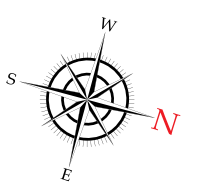
Ground Floor Plan



8th Floor Plan

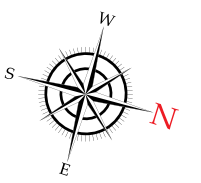


15th Floor Plan



Note: The information is indicative of the kind of development that is proposed. It is prepared and issued in good faith and is for guidance only. It does not constitute part of any offer or contract. It is subject to the approval from the respective authorities. The photographs and the artist impressions in the brochure are for reference only. All the amenities provided subject to approval of MCGM.

## Typical Floor Plan (1st To 7th , 9th To 14th, 16th & 17th)



FLAT NO.	TYPE	RERA CARPET
1	2 BHK	626 Sq. Ft.
2	2 BHK	584 Sq. Ft.
3	2 BHK	582 Sq. Ft.
4	3 BHK	888 Sq. Ft.
5	2 BHK	674 Sq. Ft.
4A	1 BHK	435 Sq. Ft.
5A	2 BHK	617 Sq. Ft.

Note: The information is indicative of the kind of development that is proposed. It is prepared and issued in good faith and is for guidance only. It does not constitute part of any offer or contract. It is subject to the approval from the respective authorities. The photographs and the artist impressions in the brochure are for reference only. All the amenities provided subject to approval of MCGM.



**PRAGATI  
DEVELOPERS**

Turning Ideas Into Reality

Office:

101, J.K.Chamber, Sector-17, Vashi, Navi Mumbai. 400 703

Site Address: **PRAGATI ICON**

Building No. 33, A.S.Gawade Marg, Pant Nagar,  
Ghatkopar East, Mumbai-400 075

Sale Contact:

**9326 063 657 / 9930 955 026**

Achitect: **Space Design Architects**, Vashi | Legal Advisor: **S.C.Pal and Associates**

Rcc Consultant: **A.G. Gokhale & Associates**

MAHARERA Registration No. **P51800026241**  
Project Approved by **LEADING BANKS & NBFC's**

Note: The information in this brochure is indicative of the kind of development that is proposed. It is prepared and issued in good faith and is for guidance only. It does not constitute part of any offer or contract. It is subject to the approval from the respective authorities. In the interest of the continuing improvement of the project and or any changes as suggested by the authorities or the Developers reserve the right to alter the Layout, Plans, Specifications, Amenities or features of the buildings without any prior notice or obligation to any buyer's in the project. The photographs and the artists impressions in the brochure are for reference only. All the amenities provided subject to approval of MHADA • MCGM.